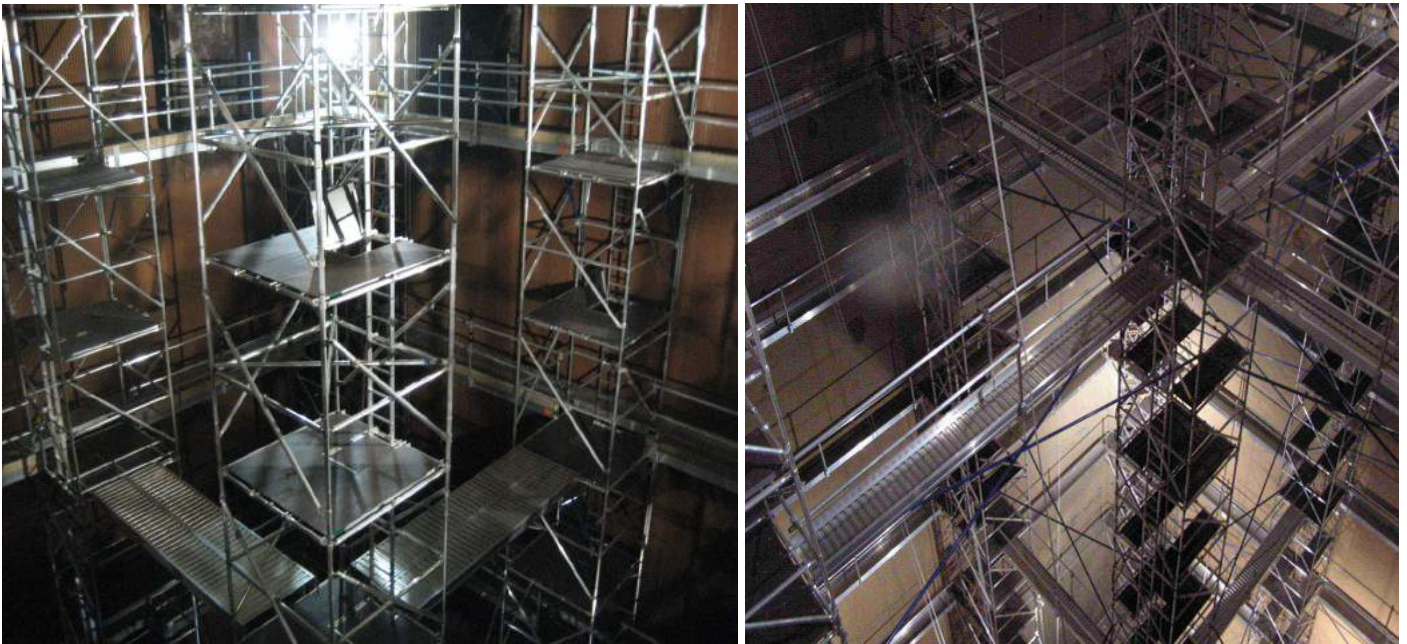


# Project News

Edition 11 May 2011

## Millmerran Quick Erect Boiler Scaffold



Working at a Queensland Power Station in the town of Millmerran, APS recently completed the erection and dismantle of the full furnace scaffold during the Unit 2 2011 outage. The Millmerran boiler is a 15m wide x 15m long x 53m high supercritical boiler, owned by Intergen it is the first black coal generator to utilise the system in Australia.

Using the Quick Erect Boiler Scaffold system, APS installed the furnace scaffold to the roof of the boiler (53m) in 6 x 12 hour shifts and removed the scaffold in 3 x 12 hour shifts.

Key advantages to using the Quick Erect System are;

- Less weight in the boiler, 1/3 the weight of traditional scaffold
- Fewer components;
- Reduced manual handling issues, all raising and lowering of components was by mechanical means, reducing the potential for strains and sprains;
- Erection teams utilise fall protection when erecting and dismantling;
- Quicker erection and dismantle times than traditional scaffolding

*For more information on the services APS can provide for your outage please call*

*03 9359 2014*

**aps**  
CONTRACT  
SERVICES